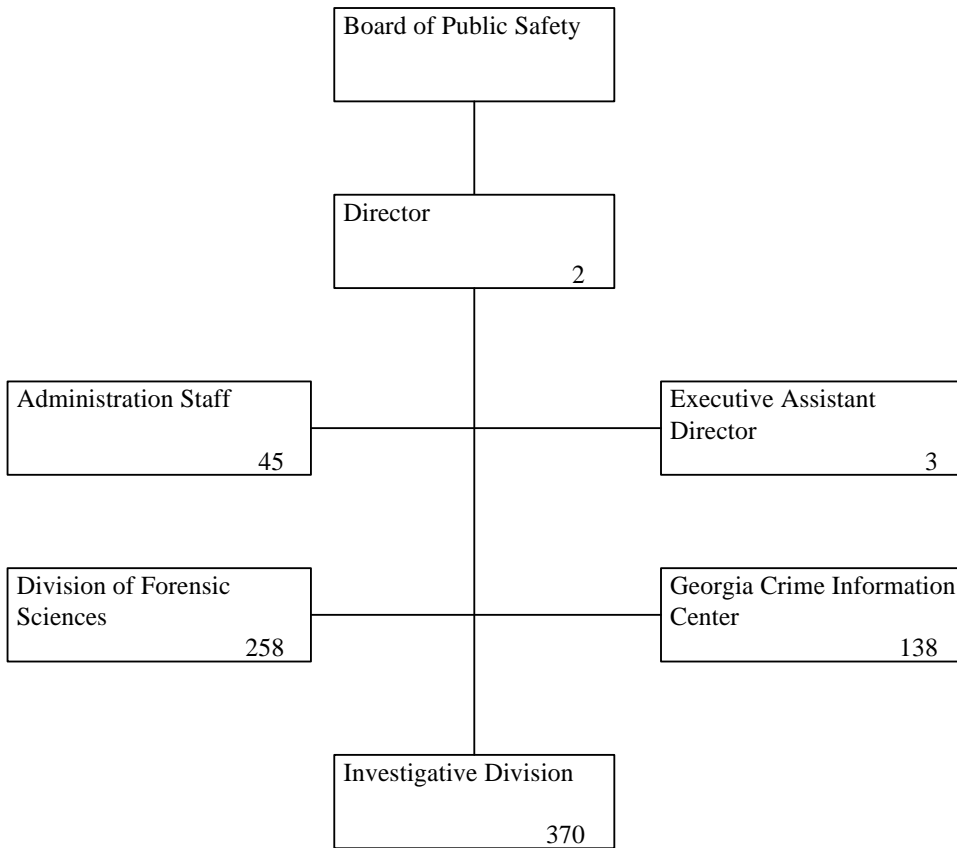


# GEORGIA BUREAU OF INVESTIGATION

Total Budgeted Positions -- 816



# GEORGIA BUREAU OF INVESTIGATION -- Financial Summary

## Expenditures, Current Budget and Agency Requests

Budget Classes/Fund Sources	FY 1999 Expenditures	FY 2000 Expenditures	FY 2001 Current Budget	FY 2002 Agency Requests		
				Adjusted Base	Enhancements	Totals
Personal Services	43,369,807	47,026,238	46,347,930	46,730,626	615,313	47,345,939
Regular Operating Expenses	7,400,345	7,486,826	6,371,747	6,362,197	251,563	6,613,760
Travel	610,429	784,813	527,379	527,379	59,500	586,879
Motor Vehicle Purchases	1,468,627	1,135,160	437,010	437,010	383,775	820,785
Equipment	1,718,409	3,735,958	1,650,395	1,210,395	79,900	1,290,295
Computer Charges	2,245,777	839,350	597,960	597,960	78,200	676,160
Real Estate Rentals	1,183,801	1,128,230	418,425	418,425		418,425
Telecommunications	1,327,436	1,500,597	1,059,319	1,059,319	294,500	1,353,819
Per Diem, Fees & Contracts	4,790,541	5,876,641	3,956,442	3,956,442		3,956,442
Evidence Purchased	705,572	789,697	423,667	423,667	88,952	512,619
Capital Outlay	188,775	500,000				
Year 2000 Project	7,270,013	2,633,136				
<b>Total Funds</b>	<b>\$72,279,532</b>	<b>\$73,436,646</b>	<b>\$61,790,274</b>	<b>\$61,723,420</b>	<b>\$1,851,703</b>	<b>\$63,575,123</b>
Less Federal & Other Funds:						
Federal Funds	10,469,586	9,284,877				
Other Funds	5,490,887	2,734,622				
<b>Total Federal &amp; Other Funds</b>	<b>\$15,960,473</b>	<b>\$12,019,499</b>				
<b>TOTAL STATE FUNDS</b>	<b>\$56,319,059</b>	<b>\$61,417,147</b>	<b>\$61,790,274</b>	<b>\$61,723,420</b>	<b>\$1,851,703</b>	<b>\$63,575,123</b>
Positions	750	813	816	816	17	833
Motor Vehicles	511	522	522	522	17	539

# GEORGIA BUREAU OF INVESTIGATION -- Financial Summary

## Current Budget and Governor's Recommendations

Budget Classes/Fund Sources	FY 2001 Current Budget	FY 2002 Governor's Recommendations				Totals
		Annualizers and Adjustments	Workload	Adjusted Base	Enhancements	
Personal Services	46,347,930	1,602,416		47,950,346		47,950,346
Regular Operating Expenses	6,371,747	745,942		7,117,689		7,117,689
Travel	527,379	9,500		536,879		536,879
Motor Vehicle Purchases	437,010	69,000		506,010	782,145	1,288,155
Equipment	1,650,395	(431,000)		1,219,395		1,219,395
Computer Charges	597,960	4,000		601,960		601,960
Real Estate Rentals	418,425			418,425		418,425
Telecommunications	1,059,319	25,000		1,084,319		1,084,319
Per Diem, Fees & Contracts	3,956,442			3,956,442		3,956,442
Evidence Purchased	423,667			423,667		423,667
Capital Outlay						
Year 2000 Project						
<b>Total Funds</b>	<b>\$61,790,274</b>	<b>\$2,024,858</b>		<b>\$63,815,132</b>	<b>\$782,145</b>	<b>\$64,597,277</b>
Less Federal & Other Funds:						
Federal Funds						
Other Funds						
<b>Total Federal &amp; Other Funds</b>						
<b>TOTAL STATE FUNDS</b>	<b>\$61,790,274</b>	<b>\$2,024,858</b>		<b>\$63,815,132</b>	<b>\$782,145</b>	<b>\$64,597,277</b>
Positions	816	24		840		840
Motor Vehicles	522	14		536		536

**GEORGIA BUREAU OF INVESTIGATION  
FY 2002 Budget Summary**

Governor's  
Recommendations

ADJUSTMENTS TO CURRENT BUDGET

FY 2001 STATE APPROPRIATIONS	61,790,274
Annualizers:	
1. Annualize the cost of the FY 2001 salary adjustment.	382,696
Other Adjustments:	
2. Eliminate one-time funding appropriated for the purchase of lab equipment needed to comply with Senate Bill 318.	(449,550)
3. Provide supply funding for DNA analysis, related to SB 318	562,500
4. Fund 2 positions related to the increased workload associated with the PeopleSoft accounting system.	87,526
5. Fund 3 analyst positions and 1 data entry position, which were previously funded by the Federal Gulf States Grant. These positions should be filled with existing vacant positions.	63,396
6. Transfer the Office of Law Enforcement from the Department of Juvenile Justice. The transfer includes 22 positions and 14 vehicles.	1,378,290
	\$63,815,132
ADJUSTED BASE	
ENHANCEMENT FUNDS	
ENHANCEMENTS	
1. Provide funding to replace 39 vehicles that have over 120,000 miles.	782,145
TOTAL ENHANCEMENT FUNDS	\$782,145
 TOTAL STATE FUNDS	 \$64,597,277

**GEORGIA BUREAU OF INVESTIGATION**  
**Functional Budget Summary**

	FY 2001 Appropriations		FY 2002 Recommendations	
	Total	State	Total	State
1. Administration	5,169,256	5,169,256	5,286,463	5,286,463
2. Investigative Division	26,449,610	26,449,610	28,850,320	28,850,320
3. Forensic Science Division	19,711,022	19,711,022	19,939,708	19,939,708
4. Georgia Crime Information Center	10,460,386	10,460,386	10,520,786	10,520,786
<b>TOTAL APPROPRIATIONS</b>	<u>\$61,790,274</u>	<u>\$61,790,274</u>	<u>\$64,597,277</u>	<u>\$64,597,277</u>

**RECOMMENDED APPROPRIATION:** The Georgia Bureau of Investigation is the budget unit for which the following State Fund Appropriation is recommended for FY 2002: \$64,597,277.

# GEORGIA BUREAU OF INVESTIGATION

## Roles and Responsibilities

The Georgia Bureau of Investigation (GBI) serves as a primary investigation and enforcement agency in the state's fight against crime and corruption.

Upon request, the GBI provides investigative and enforcement support services to local and federal law enforcement agencies throughout the state. In addition to conducting general and special investigations, the bureau provides forensic laboratory examinations and collects data on crime and criminals. Numerous programs are operational and the latest technological advancements in crime fighting are in place to combat drug trafficking and other crimes.

The operations of the GBI include a staff of 816 employees. These employees are located at the Bureau Headquarters, and are strategically housed in 15 General Investigation Offices, 4 Regional Drug Enforcement Offices and 6 Regional Crime Laboratories through which the various support services are carried out.

### GENERAL INVESTIGATION

The mission of the General Investigation Section, within the investigative division is to provide assistance to local law enforcement agencies in the investigation of crimes committed throughout the state on a daily basis. The office also has original jurisdiction in the investigation of crimes committed on state property; the enforcement of laws governing non-tax paid alcohol and tobacco; and the investigation of crimes committed on the basis of race, creed, religion or national origin. The majority of the manpower resources are distributed among the 15 regional field offices and the 4 Regional Drug Enforcement Offices. The regional field offices conduct general investigations of all crimes and comprise the most significant program in the General Investigation Section of the division's budget. The regional drug enforcement offices investigate all levels of drug trafficking with an emphasis on major violators.

There are 7 specialized areas of operations:

- Crime Analysis Unit
- Crime Scene Specialist Program
- Financial Investigations Unit
- Intelligence Unit
- Multi-Jurisdictional Task Forces
- Polygraph Unit
- Healthcare Fraud Unit

A number of services are provided to assist local agencies in solving crimes throughout the state:

- Aid in the detection, apprehension and conviction of criminals, and behavioral science related services;

- Criminal investigations into auto thefts, car jacking, organized crime, fugitives, and controlled substances;
- Arson investigations;
- Publication and dissemination of the Criminal Activity Bulletin;
- Polygraph exams for other criminal justice agencies upon request; and
- Assistance with security and crowd control for major organized events and civil disturbances in the state.

### FORENSIC SERVICES

The Division of Forensic Sciences operates the headquarters laboratory in Atlanta and 6 regional laboratories in Savannah, Columbus, Augusta, Moultrie, Macon and Summerville. The laboratories examine submitted evidence, report scientific conclusions about that submitted evidence, and testify in court about results. These services must be timely and as up-to-date as possible to satisfy the needs of the courts and the police. The Headquarters Laboratory consists of the following programs:

- Administration
- Criminalistics
- DNA Database
- Drug Identification
- Serology/DNA
- Questioned Document
- Implied Consent
- Photography
- Toxicology
- Latent Examiner
- Firearms Identification
- Medical Examiner Services.

### GEORGIA CRIME INFORMATION CENTER

The role of the Crime Information Center includes the operation of a statewide Criminal Justice Information System (CJIS) Network, linking criminal justice agencies to automated state and national information databases. The center also operates and maintains a central repository of statistical data describing the nature and extent of reported crime known under the name of its FBI counterpart, the Uniform Crime Reporting system. It performs audits of Georgia's criminal justice agencies.

### AUTHORITY

Title 35 of the Official Code of Georgia Annotated.

# GEORGIA BUREAU OF INVESTIGATION

## Strategies and Services

The Georgia Bureau of Investigation provides an invaluable service by assisting the local and federal law enforcement agencies throughout the state of Georgia. As new innovations and technological advances become available, assisting in investigations continues to become more complex. Local and federal agencies look to the bureau to provide skilled agents for their expertise in various crime analysis and crime investigation. For this reason, the bureau has a complex recruitment and training program. The bureau continues to make every effort to recruit and hire skilled, qualified and professional agents. In an effort to display his support, Governor Barnes is recommending a special pay package for the bureau's sworn personnel.

Under the Governor's special pay package, the minimum target hire salary for a special agent will be increased from \$29,382 to \$33,528. This represents an additional \$4,146 or a 14% increase in the target hire salary.

In addition to increasing the target hire salary, the Governor has made funding available to provide current filled positions a 4% increase or to be moved to the new minimum, which ever would be more beneficial to the individual. If the special pay package were combined with the 3.5% merit increase, the average additional pay for current filled special agents will be \$3,606, representing an 11.9% increase.

### FORENSIC SCIENCES

The Division of Forensic Sciences (DOFS) provides scientific support to criminal justice agencies to enable them to detect, apprehend and prosecute criminals. Except for limited services provided by local federal laboratories, the Division of Forensic Sciences is the single source for forensic services available to the criminal justice community in Georgia.

Currently, the Division of Forensic Sciences serves the entire state of Georgia through a headquarters laboratory and six regional laboratories. Headquarters is located in Atlanta, while the regional laboratories are located in Savannah, Macon, Summerville, Columbus, Augusta and Moultrie.

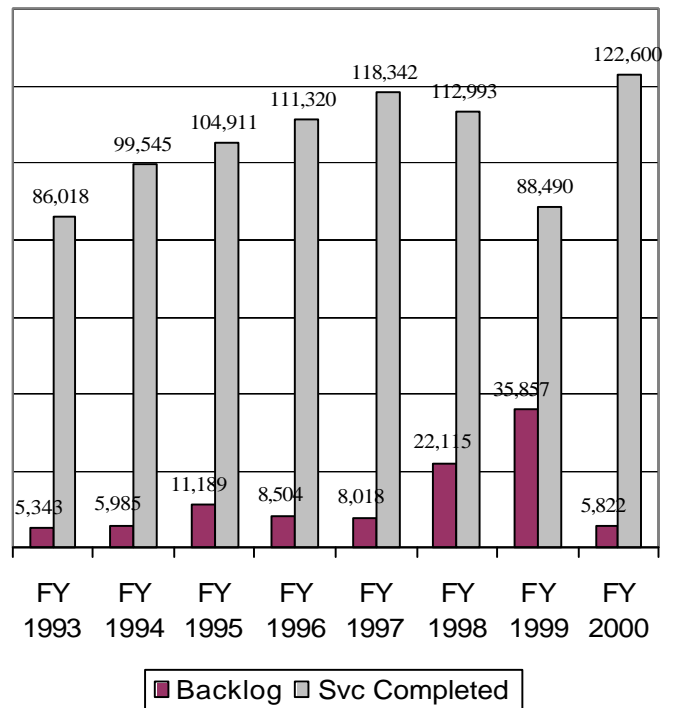
The Division of Forensic Sciences provides services in the following areas: Chemistry/Drug Identification, Serology/DNA, Pathology, Forensic Toxicology/Blood Alcohol, Firearms Identification, Latent Fingerprints, DNA Database, Trace Evidence, Questioned Documents, Forensic Photography and Implied Consent.

### BACKLOG OF FORENSIC SERVICES

The Division of Forensic Services continues to focus on reducing the current backlog of services and meeting the

goal of completing services within a 30-day period. In FY 2000, the Governor provided the bureau with 83 additional forensic positions and \$2.6 million for lab equipment. With the Governor's support and the bureau's hard work, the year-end backlog for completed services was the lowest it has been since FY 1993. The backlog accounted for 5,822 cases. Compared to FY 1999 backlog of 35,857 cases, FY 2000 represented a reduction of 30,035 cases. In addition to the dramatic reduction of the backlog, the bureau was able to complete 122,600 cases versus FY 1999's 88,490 cases. The bureau's ability to reduce the backlog was a direct result of increasing the percentage of cases that were completed within a 30-day period. In FY 2000, 57% of the cases were completed within 30 days. This was a great achievement compared to FY 1999's 36%. This represented a 21 point increase. The bureau is not satisfied and will continue to strive to improve in both of these areas.

**Backlog Compared to Completed Services**



## GEORGIA BUREAU OF INVESTIGATION -- Strategies and Services

### NEW CRIME LABORATORIES AND MORGUES

As in previous years, Governor Barnes is providing capital funding to assist the bureau in its endeavor to attack its ever-increasing caseload and provide more timely assistance to the local agencies of the state.

In the FY 2001 Amended Budget, Governor Barnes recommended \$5 million in G.O. Bonds to construct a new regional laboratory to be located in Dahlonega. This will give the bureau a total of 8 laboratories. The new facility will allow the bureau to reduce the service territory covered by the Summerville lab and the Atlanta (headquarters) lab.

In addition to a new regional lab, Governor Barnes included \$2.3 million to construct a freestanding morgue, medical examiner annex and toxicology annex adjacent to the Moultrie lab.

Other initiatives funded in prior years by the Governor include the replacement of a 19-year-old morgue; the construction of a new morgue and toxicology lab adjacent to the Savannah facility; construction of a laboratory annex and morgue building adjacent to the headquarters building; and replacement of the laboratory and addition of a morgue facility in Augusta.

These recommendations display Governor Barnes commitment to provide the necessary resources to continue to keep Georgia as one of the nations leading Forensic Science operations.

### CRIME INFORMATION

#### FIREARMS PROGRAM (INSTANT GUN CHECK)

The Firearms Program provides a state background check for firearms purchasers. Administered to be in conformity with the provisions of Georgia law and the federal Brady Handgun Violence Protection Act, the program provides the means for a federally licensed firearms dealer to call a 1-800 number to obtain an "instant check" on individuals prior to the transfer/sale of a handgun. This check is to insure by law that the individual is permitted to possess a handgun or long gun.

In FY 2000, the Georgia Crime Information Center processed 237,545 transactions and 12,478 were denied. This represented an increase of 65,396 transactions or over a 38% increase from the previous fiscal year. In FY 1999 the center processed 172,149 transactions.

#### AUTOMATED FINGERPRINT IDENTIFICATION SYSTEM (AFIS)

AFIS technology automates the processing of criminal, latent and applicant fingerprints with speed and accuracy. The processing of criminal documents such as fingerprint cards and reports of final disposition create and update computerized criminal history records, which are used by all criminal justice agencies throughout the state and nation. These records are also used to respond to inquiries for applicant background checks. Latent prints submitted from law enforcement agencies are processed for the purpose of

providing investigative leads or positive identification of a suspect.

Remote sites where AFIS workstations are communicating with the GBI's AFIS are capable of sending and receiving electronic fingerprint images and making fingerprint identifications remotely.

The GBI receives fingerprint images electronically from law enforcement agencies able to transmit images directly into the GBI's AFIS via a Live Scan device.

Eighteen agencies transmit images directly to the GBI. These agencies provide arrest-booking services to many other agencies in their area. In total, electronic images are received from over 150 agencies.

The AFIS database files currently total 2,182,303. Tenprint files store 2 thumbs for each offender and total 1,213,428 people. Latent cognizant files total 968,875 people and represents 10 fingers stored for each offender. The database also contains 4,607 prints lifted from crime scenes that do not match any prints in the above databases. These prints are stored for future reference

Automation of final disposition information is occurring in 2 ways. Agencies can enter final dispositions directly into the computerized criminal history database via the GO Network and a second transaction from specially designed case management software. Electronic updates of final dispositions from both types of automated courts accounted for approximately 20% of the judicial data to GCIC.

#### CRIMINAL JUSTICE INFORMATION SYSTEM (CJIS) NETWORK

The CJIS network provides law enforcement and other criminal justice agencies quick access to critical state and national driver's records, vehicle, boat and airplane registrations, stolen vehicles and property, wanted persons; and missing children and adults. There are currently 7,200 terminals on the CJIS Network. During FY 2000, the system processed 157,000,000 messages.

#### UNIFORM CRIME REPORTING (UCR)

UCR is a program designed to collect and provide crime statistics for Georgia on incidents of crime and arrests. Crime and arrests statistics are reported to local law enforcement agencies, the Governor and General Assembly, the Criminal Justice Coordinating Council, county and municipal officials, and media representatives. Interested citizens also could obtain the same statistics through the publication of "Georgia UCR Summary Report".

#### INVESTIGATIVE PROGRAMS

##### REGIONAL OFFICES

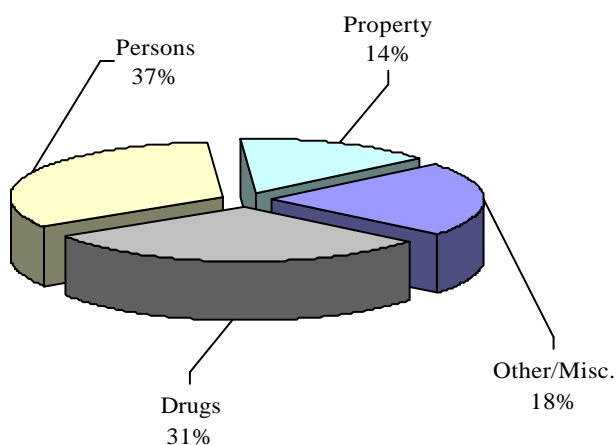
There are 15 regional offices that conduct general investigations of all types of criminal activity including drug enforcement. Each office typically covers 8 to 12 counties and is composed of 12 agents, a child abuse specialist and a crime scene specialist. In FY 2000, the

## GEORGIA BUREAU OF INVESTIGATION -- Strategies and Services

regional offices conducted investigations on 10,900 cases, which compiled a total of 384,124 investigative hours.

### REGIONAL DRUG ENFORCEMENT OFFICES

FY 2000 Investigative Cases  
Percentage of Hours  
Worked by Type of Case



There are three offices that are designated to investigate all levels of drug trafficking with an emphasis on major violators. The offices are located in Gainesville, Macon and Savannah. In FY 2000, the regional drug enforcement offices accounted for 558 drug investigations, which resulted in 394 arrests and \$6.4 million of seized contraband.

### MULTI-JURISDICTIONAL DRUG TASK FORCE

GBI provides an assistant special agent-in-charge (ASAC) to supervise multi-jurisdictional drug task forces throughout the state. The initial task force was funded with

a federal grant and was staffed with representatives from various local law enforcement agencies within a judicial circuit. Over the years, the bureau has had numerous requests to provide ASAC's to serve as supervisors for multi-jurisdictional task forces throughout the state.

Currently the GBI is responsible for the supervision of 16 multi-jurisdictional task forces that work street to mid-level and in some instances major drug investigations in 50 of the 159 counties in Georgia. These supervisors provide experienced, capable leadership and help to ensure an organized and cooperative effort between not only the GBI and the task forces but also other law enforcement agencies.

In FY 2000, the force made 4,122 arrests; seized \$95,817,497 in drugs and \$1,047,774 in property; and made \$713,405 in forfeitures.

### SPECIAL UNITS

Over the years, it has been necessary for the bureau to create specialized units. These units narrow the investigative focus and allow individual agents to become highly trained experts and concentrate on specific areas of crime analysis and investigation. These specialized units include the Crime Analysis Unit, Financial Investigation Unit, Polygraph Unit, Fugitive Squads, Anti-terrorist Unit, Bomb Disposal Unit, Special Weapons and Tactics Team, Intelligence Unit, D.A.R.E. Unit, Governor's Task Force, State Health Care Fraud Unit and State Drug Task Force.

### INTELLIGENCE UNIT

The Intelligence Unit acts as a repository for criminal intelligence information. The unit provides specialized support to GBI work units as well as other state, federal and local law enforcement agencies throughout the country.

Information from intelligence files is disseminated upon request to all law enforcement agencies. An average of over 13,000 requests is received each year. The unit publishes and disseminates the Criminal Activity Bulletin, which is the means of notifying local law enforcement agencies and district attorneys of the impending release from prison persons convicted of crimes in their jurisdictions. The unit is affiliated with local, regional, national and international law enforcement agencies.

### STATE HEALTH CARE FRAUD CONTROL UNIT

The unit's function is to identify and arrest individuals who commit Medicaid-provider fraud. The Health Care Fraud Unit is a joint venture between the GBI, the Attorney General's Office and the Department of Audits. Since its inception, in March 1995, the division has opened 579 cases. Currently they have 89 active cases. The unit recovered \$29 million with another \$1.8 million to be paid to the Georgia Medicaid Program.

## GEORGIA BUREAU OF INVESTIGATION

### Results-Based Budgeting

#### Georgia Crime Information Center

Purpose: Provide accurate, timely and complete criminal justice information to criminal justice agencies to enable them to carry out their public safety functions and to the public at large to be used as provided by law.

	FY 2000 Desired	FY 2000 Actual	FY 2001 Desired	FY 2002 Desired
<p>Goal 1: The criminal justice information available from GCIC to all entities authorized by law will be more complete.</p> <p>- In FY 2002, law enforcement agencies will report 95% of all arrests to the Georgia Crime Information Center.</p> <p>- In FY 2001, 85% of the felony arrests on file for a reporting period of 1-7 years prior will have a corresponding disposition reported.</p> <p>- Georgia law enforcement agencies needed to represent 90% of Georgia's population will continue to maintain participation in the Uniform Crime Reporting (UCR) program by submitting UCR data to GCIC. (# of agencies / % of population).</p>	90% 72,000	90% 72,000	95% 76,000	95% 76,000
	85%	80% (641,841) FY '92 - '98	85%	85%
	90%	> 90%	90%	90%
	540	541	540	540
<p>Goal 2: Criminal justice information will be processed by the central repository accurately and in a timely manner .</p> <p>- GCIC will continue to process at least 95% of all reported arrest data processed through the central repository within 2 days of receipt.</p> <p>- GCIC will continue to process at least 95% of all reported disposition data through the central repository within 35 days of receipt</p> <p>-GCIC will continue to process 95% of submitted applicant cards within 5 days of receipt by the central repository.</p> <p>- GCIC will continue to maintain an accuracy rate of 97% for all criminal history information processed by the central repository.</p> <p>- The percentage of law enforcement agencies performing complete and timely validations of all Law Enforcement Data System/National Crime Information Center wanted person records will remain at 95% (380+ agencies).</p> <p>- The percentage of criminal justice agencies audited that achieve a satisfactory compliance rating when the audit process is completed by GCIC will remain at 95%.</p>	>95%	>99%	>95%	>95%
	>95%	>98%	>95%	>95%
	>95%	>95%	>95%	>95%
	97%	99.50%	97%	97%
	95%	96%	95%	95%
	95%	95%	95%	95%

**GEORGIA BUREAU OF INVESTIGATION -- Results-Based Budgeting**

Goal 3: Background checks of potential buyers for federally licensed firearms dealers will be provided in a timely and accurate manner. - The percentage of all requested background checks to be completed in less than 3 minutes will remain at 85%.	FY 2000 Desired	FY 2000 Actual	FY 2001 Desired	FY 2002 Desired
	85%	90%	85%	85%
Program Fund Allocation -- Total Funds		\$13,699,427	\$10,460,386	\$10,520,786
State Funds		\$10,137,682	\$10,460,386	\$10,520,786

**GBI Crime Lab**

Purpose: Provide scientific support to criminal justice agencies to enable them to detect, apprehend, and prosecute criminals by performing accurate, useful, and timely laboratory analyses and testimony.

Goal 1: To provide accurate, useful, and timely scientific analyses and testimony	FY 2000 Desired	FY 2000 Actual	FY 2001 Desired	FY 2002 Desired
- The GBI Crime Lab will pass an annual audit review which examines the adequacy of the laboratory's quality controls. [1.]	Pass	Passed	Pass	Pass
- Maintain from a customer satisfactory rating of 90% or above on a scale of (0-100) for scientific reports as measured by customer survey	90%	93%	90%	90%
- In FY 2001 at least 60% of services of all cases will be completed within 30 calendar days from request as follows:				
- Single service cases completed within 30 days	55%	62%	60%	80%
	(33,545)	(50,379)	(36,053)	
- Multiple service cases completed within 60 days	55%	56%	60%	60%
	(16,478)	11,341	(17,710)	
- Multiple service cases requiring separate labs - completed in 90 days	55%	56%	60%	N/A [2.]
	(8,828)	(409)	(9,488)	
- Death cases completed within 60 days	55%	57.7%	60%	60%
Goal 2: To improve the breadth and depth of forensic services.				
- The GBI Crime Lab will enable the DNA unit to have complete DNA profiles on all offenders covered by current Georgia statute within 30 days.	60 Days	60 Days	30 Days	30 Days
Program Fund Allocation -- Total Funds		\$21,371,318	\$19,711,022	\$19,939,708
State Funds		\$20,555,979	\$19,711,022	\$19,939,708

Notes:

- 1 - No major non-conformities will be identified in the audit and no more than 20% minor non-conformities will be
- 2 - This function will be revised in FY 2002.

**GEORGIA BUREAU OF INVESTIGATION -- Results-Based Budgeting**

**Investigative Division/ Criminal Investigations**

Purpose: Provide investigative services, intelligence information, specialized units and training to criminal justice agencies in order to promote public safety.

Goal 1: Assist criminal justice agencies in solving crimes.	FY 2000 Desired	FY 2000 Actual	FY 2001 Desired	FY 2002 Desired
- Maintain a rating of met or exceeded from at least 80% of the criminal justice agencies that requested and utilized investigative assistance,	80%	N/A [1.]	80%	80%
-Maintain a rating of met or exceeded from at least 80% of the criminal justice agencies that requested drug enforcement assistance.	80%	N/A [1.]	80%	80%
-Maintain a rating of met or exceeded from at least 80% of the criminal justice agencies that requested specialized law enforcement assistance.	80%	N/A [1.]	80%	80%
Goal 2: Participate in drug abuse awareness training of 5th and 6th grade students by providing law enforcement officers with the specialized skills necessary to teach the Drug Abuse Resistance Education (DARE) program. -At least 90% of the qualified officers that apply for DARE Officer slots will successfully graduate from training.	90%	97%	90%	90%
Program Fund Allocation -- Total Funds		\$32,892,702	\$26,449,610	\$28,850,320
State Funds		\$25,268,994	\$26,449,610	\$28,850,320
Notes:				
1. Data was not available for these measures by the publication date.				
Other Activities -- Total Funds		\$5,473,199	\$5,169,256	\$5,286,463
State Funds		\$5,454,492	\$5,169,256	\$5,286,463
<b>TOTAL - All Programs Total Funds</b>		<b>\$73,436,646</b>	<b>\$61,790,274</b>	<b>\$64,597,277</b>
<b>State Funds</b>		<b>\$61,417,147</b>	<b>\$61,790,274</b>	<b>\$64,597,277</b>