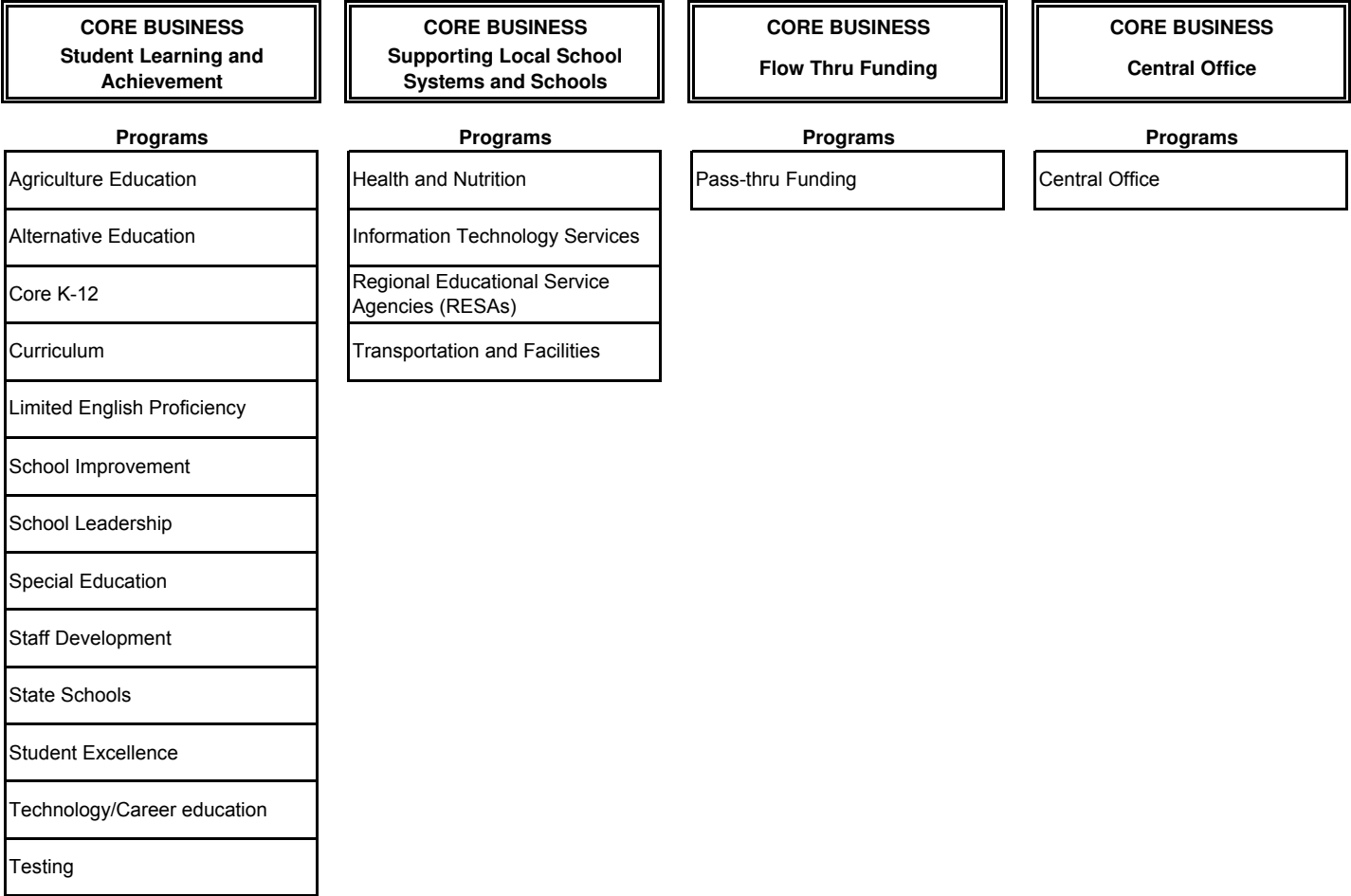


# STATE BOARD OF EDUCATION

**Mission:** Georgia will lead the nation in improving student achievement.

**Vision:** It is the mission of the Department of Education to function as a service-oriented and policy-driven agency that meets the needs of local school systems as they go about the business of preparing all students for college or a career in a safe and drug-free environment where we ensure that no child is left behind.



For Strategic Plans and Performance Measures, see [www.opb.state.ga.us](http://www.opb.state.ga.us)

# STATE BOARD OF EDUCATION

## DEPARTMENT BUDGET FINANCIAL SUMMARY - FISCAL YEAR 2006

Budget Classes / Fund Sources	FY 2003 Expenditures	FY 2004 Expenditures	FY 2005 Current Budget	FY 2006 Department Request			FY 2006 Governor's Recommendation Total
				100% Budget Level	97% Budget Level	105% Budget Level	
Personal Services	\$38,942,179	\$37,715,621	\$44,810,537	\$45,699,537	\$45,699,537	\$45,699,537	\$35,017,643
Regular Operating Expenses	4,142,399	5,292,157	8,530,753	9,345,640	9,345,640	10,220,473	8,310,679
Travel	705,708	806,954	1,440,937	1,440,937	1,440,937	1,440,937	1,405,866
Equipment	71,866	46,037	223,103	223,103	221,373	223,103	181,051
Computer Charges	6,325,118	18,277,126	12,982,306	12,982,306	12,803,394	12,982,306	13,222,842
Real Estate Rentals	1,209,962	1,169,645	1,193,504	1,193,504	1,193,504	1,193,504	1,193,504
Telecommunications	676,068	719,160	814,820	814,820	814,820	814,820	722,812
Per Diem and Fees	2,514,846	2,917,443	4,722,687	4,722,687	4,679,075	4,722,687	3,842,768
Capital Outlay	30,569,699						
Contracts	24,498,637	17,756,490	23,479,279	22,614,950	22,324,991	25,457,247	24,152,506
Utilities	771,021	799,895	771,396	771,396	771,396	771,396	17,696
<b>QBE Formula Grants:</b>							
Kindergarten/Grades 1 - 3	1,643,027,088	1,701,449,206	1,707,110,524	1,707,110,524	1,707,110,524	1,744,234,865	1,786,068,564
Grades 4 - 8	1,509,214,465	1,558,843,885	1,564,815,699	1,564,815,699	1,564,815,699	1,564,815,699	1,605,189,710
Grades 9 - 12	727,300,107	760,946,059	765,460,363	765,460,363	765,460,363	765,460,363	817,719,193
Vocational Education Laboratories	189,596,166	202,217,533	202,846,671	202,846,671	202,846,671	202,846,671	217,385,131
Special Education	734,609,193	793,709,927	796,138,993	796,138,993	796,138,993	796,138,993	850,168,313
Gifted	167,209,720	191,525,578	192,300,693	192,300,693	192,300,693	192,300,693	208,975,513
Remedial Education	21,203,970	22,048,886	22,033,782	22,033,782	22,033,782	22,033,782	21,238,501
Limited English-Speaking Students	64,153,959	70,181,744	70,492,962	70,492,962	70,492,962	70,492,962	79,709,901
Alternative Programs	60,968,843	72,301,580	70,537,965	70,537,965	70,537,965	70,537,965	74,469,042
Staff Development	25,465,114	31,146,339	31,135,509	31,135,509	31,135,509	31,135,509	32,295,096
Additional Instruction	35,637,546	46,869,079	47,742,553	47,742,553	47,742,553	47,742,553	50,200,955
Media	141,665,063	148,678,213	149,198,288	149,198,288	149,198,288	149,198,288	156,366,582
Indirect Cost	900,841,636	920,705,498	922,876,443	922,876,443	922,876,443	922,876,443	952,754,203
Local Five Mill Share	(1,101,591,195)	(1,206,225,204)	(1,264,596,078)	(1,264,596,078)	(1,264,596,078)	(1,264,596,078)	(1,328,947,230)
Midterm Adjustment Reserve	12,476,340	23,404,627				132,532,659	
Teacher Salary Schedule Adjustment			85,296,749	85,296,749	85,296,749	85,296,749	103,454,317
Temporary QBE Reduction	(419,390)	(283,478,659)	(332,835,102)	(332,835,102)	(483,967,157)	(224,855,759)	(332,835,102)
<b>Other Categorical Grants:</b>							
Pupil Transportation	164,765,207	157,439,881	151,866,803	151,866,803	147,310,799	156,835,123	158,353,875
Equalization Formula	268,203,932	288,182,775	341,006,547	341,006,547	330,776,351	341,006,547	371,657,510

# STATE BOARD OF EDUCATION

## DEPARTMENT BUDGET FINANCIAL SUMMARY - FISCAL YEAR 2006

Budget Classes / Fund Sources	FY 2003 Expenditures	FY 2004 Expenditures	FY 2005 Current Budget	FY 2006 Department Request			FY 2006 Governor's Recommendation Total
				100% Budget Level	97% Budget Level	105% Budget Level	
Sparsity Grants	6,201,415	6,261,321	6,352,443	6,352,443	6,352,443	6,352,443	6,352,443
Special Education Low-Incidence	804,401	810,249	826,722	826,722	826,722	826,722	826,722
<b>Non-QBE Grants:</b>							
Retirement (HB 272 and HB 1321)	5,450,830	5,508,750	5,508,750	5,508,750	5,343,487	5,508,750	5,508,750
Instructional Services for Handicapped	245,016,633	286,845,135	259,777,567	259,777,567	259,777,567	259,777,567	259,777,567
Tuition for the Multi-Handicapped	1,790,800	1,739,775	1,658,859	1,658,859	1,609,093	1,658,859	1,658,859
Severely Emotionally Disturbed (SED)	69,757,847	69,438,970	65,852,330	65,852,330	64,108,483	72,680,137	71,460,738
School Lunch (Federal)	308,621,509	337,327,801	188,375,722	188,375,722	188,375,722	188,375,722	188,375,722
School Lunch Grants (State)	37,026,890	36,244,764	35,221,838	35,221,838	34,165,183	35,221,838	36,017,592
Regional Educational Service Agencies	11,514,098	11,111,515	11,183,730	11,183,730	10,848,218	12,183,730	11,027,045
Georgia Learning Resources System	6,418,515	6,266,102	5,131,950	5,131,950	5,131,519	5,131,950	5,117,573
High School Program - Tech/Career	51,130,778	37,789,892	35,572,883	35,572,883	35,244,180	35,572,883	35,737,474
High School Programs - Agriculture		11,120,713	7,906,138	7,711,138	5,711,138	6,326,138	7,906,138
Special Education at State Institutions	3,814,150	3,396,000	3,556,873	3,556,873	3,450,167	3,556,873	3,556,873
PSAT Exams	719,129	719,129	719,129	719,129	719,129	719,129	719,129
Payment of Federal Funds to DTAE	15,108,102	16,897,498	18,888,697	18,888,697	18,888,697	18,888,697	18,888,697
Education of Homeless Children/Youth	1,367,968	1,983,154	1,851,164	1,851,164	1,851,164	1,851,164	1,851,164
Next Generation Schools Grants	975,000	109,800	100,000	100,000	100,000	100,000	100,000
Refugee School Impact	600,000	541,507	639,390	639,390	639,390	639,390	639,390
Robert C. Byrd Scholarship Program	1,188,000	1,180,500	1,212,000	1,212,000	1,212,000	1,212,000	1,212,000
Health Insurance - Non-Certificated	102,434,766	107,826,070	107,826,070	107,826,070	104,591,288	107,826,070	242,526,070
Personnel and Retired Teachers							
Teachers' Health Insurance							21,576,229
State Schools							20,500,522
Preschool Handicapped Program	22,207,231	21,881,401	23,501,959	23,501,959	22,796,900	23,501,959	23,803,623
Mentor Teachers	1,182,750	1,158,316	1,099,132				1,099,132
Advanced Placement Exams	2,808,000	1,608,000	1,608,000	2,783,000	2,783,000	3,163,000	2,783,000
Serve America Program	400,630	469,042	752,037	752,037	752,037	752,037	752,037
Youth Apprenticeship Grants	4,123,000	4,022,450	3,811,974	3,811,974	3,697,615	3,811,974	3,811,974
Joint Evening Programs	253,204	191,578					
Pay for Performance	6,718,400	5,702,222	2,667,165	1,728,685	1,728,685	1,723,295	
Charter Schools	7,252,665	2,953,488	6,879,395	6,879,395	6,874,904	7,279,395	7,274,904

# STATE BOARD OF EDUCATION

## DEPARTMENT BUDGET FINANCIAL SUMMARY - FISCAL YEAR 2006

Budget Classes / Fund Sources	FY 2003 Expenditures	FY 2004 Expenditures	FY 2005 Current Budget	FY 2006 Department Request			FY 2006 Governor's Recommendation Total
				100% Budget Level	97% Budget Level	105% Budget Level	
Migrant Education (State)	274,395	267,533	267,535	267,535	259,509	267,535	259,509
Postsecondary Options	3,336,062	2,381,573					
Character Education	303,840	89,629					
Student Testing	13,559,338	10,975,646	20,829,837	23,911,891	24,125,439	27,072,281	14,207,700
Internet Access	3,826,815	3,644,339	3,644,339	3,644,339	3,535,009	3,644,339	3,535,009
National Teacher Certification	3,528,022	5,873,884	10,403,035	9,403,035	9,403,035	9,403,035	11,038,035
Principal Supplements	5,787,990	5,643,290	5,361,125	5,361,125	5,200,291	5,361,125	5,361,125
Grants for School Nurses	30,000,000	30,000,000	30,000,000	30,000,000	30,000,000	30,000,000	30,000,000
Reading and Math Programs	56,167,527	55,535,547	29,979,683	28,115,683	26,652,770	28,115,683	26,652,770
School Improvement Teams	21,138,580	11,445,400	11,636,228	11,636,228	11,461,685	11,636,228	11,636,228
Communities In Schools	1,476,012	1,305,919	1,320,623	1,320,623	1,281,004	1,320,623	1,281,004
Environmental Science Grants	50,000						
Title I-A Improving Basic Programs	343,127,263	390,055,819	311,537,540	311,537,540	311,537,540	311,537,540	311,537,540
Title I-B Reading First		23,408,941	54,328,841	54,328,841	54,328,841	54,328,841	50,116,464
Title I-B Even Start Family Literacy	7,814,109	7,345,553	6,391,803	6,391,803	6,391,803	6,391,803	6,391,803
Title I-C Migrant Education	8,895,920	10,594,970	8,548,626	8,548,626	8,548,626	8,548,626	8,548,626
Title I-D Neglected and Delinquent	3,448,692	2,342,674	2,000,255	2,000,255	2,000,255	2,000,255	2,000,255
Title I-F Comprehensive School Reform	6,725,269	8,426,644	17,222,647	17,222,647	17,222,647	17,222,647	17,222,647
Title II-A Improving Teacher Quality	76,046,233	89,245,683	72,520,695	72,520,695	72,520,695	72,520,695	72,520,695
Title II Math/Science Partnership							4,212,377
Title II-D Enhancing Education Thru Technology	17,730,038	23,130,663	19,170,536	19,170,536	19,170,536	19,170,536	19,170,536
Title III-A English Language	7,687,837	10,677,727	10,629,204	10,629,204	10,629,204	10,629,204	10,629,204
Title IV-A Safe and Drug Free Schools	12,970,116	13,203,368	9,386,637	9,386,637	9,386,637	9,386,637	9,386,637
Title IV-B 21st Century Comm. Learning	4,695,477	21,823,689	27,235,252	27,235,252	27,235,252	27,235,252	27,235,252
Title V Innovative Programs	10,026,443	11,575,487	7,410,479	7,410,479	7,410,479	7,410,479	7,410,479
Title VI-B Rural and Low-Income	6,941,587	8,235,241	6,946,366	6,946,366	6,946,366	6,946,366	6,946,366
Title VI-A State Assessment Programs	7,427,490	9,428,919					9,704,191
<b>Subtotal</b>	<b>\$7,242,627,035</b>	<b>\$7,323,210,757</b>	<b>\$7,087,651,889</b>	<b>\$7,087,651,889</b>	<b>\$6,909,632,130</b>	<b>\$7,384,351,489</b>	<b>\$7,560,157,260</b>

# STATE BOARD OF EDUCATION

## DEPARTMENT BUDGET FINANCIAL SUMMARY - FISCAL YEAR 2006

Budget Classes / Fund Sources	FY 2003 Expenditures	FY 2004 Expenditures	FY 2005 Current Budget	FY 2006 Department Request			FY 2006 Governor's Recommendation Total
				100% Budget Level	97% Budget Level	105% Budget Level	
<u>Less:</u>							
Federal Funds	\$1,093,304,890	\$1,354,295,049	\$1,141,268,592	\$1,141,268,592	\$1,141,268,592	\$1,141,268,592	\$1,111,268,592
Other Funds	118,068,137	51,654,887	12,391,307	12,391,307	12,391,307	12,391,307	42,391,307
Tobacco Funds	30,000,000						
Subtotal	\$1,241,373,027	\$1,405,949,936	\$1,153,659,899	\$1,153,659,899	\$1,153,659,899	\$1,153,659,899	1,153,659,899
<b>TOTAL STATE GENERAL FUNDS</b>	<b>\$6,001,254,008</b>	<b>\$5,917,260,821</b>	<b>\$5,933,991,990</b>	<b>\$5,933,991,990</b>	<b>\$5,755,972,231</b>	<b>\$6,230,691,590</b>	<b>\$6,406,497,361</b>
Positions	724	726	759	759	759	759	762
Motor Vehicles	54	55	52	52	52	52	52

# STATE BOARD OF EDUCATION

## BUDGET SUMMARY - FISCAL YEAR 2006

Governor's Recommended Adjustments to the Current Budget	Amounts
<b>FY 2005 STATE GENERAL FUND APPROPRIATIONS</b>	<b>\$5,933,991,990</b>
1. Annualize the cost of the FY 2005 salary adjustment.	\$86,402,333
2. Provide a 2% increase to the state base salary on the teacher salary schedule for the State Board of Education effective September 1, 2005. This proposed 2% salary improvement is in addition to the salary increases awarded to certificated personnel through the normal progression on the teacher salary schedule. Provide for a 2% increase for bus drivers and lunchroom workers effective July 1, 2005.	105,768,823
3. Increase personal services to provide a salary increase of 2% effective January 1, 2006 for central office (\$227,992) and state school (\$165,097) employees. Adjust funding for Regional Educational Service Agencies (\$87,928), Severely Emotionally Disturbed network (\$479,101), Preschool Handicapped (\$158,981) and High School Programs (\$39,997) to provide a salary increase of 2% effective January 1, 2006.	1,159,096
4. Increase personal services to reflect an adjustment in the employer share of the State Health Benefit Plan premiums from 13.1% to 13.53%. (Funds are for central office and all other activities excluding QBE.)	4,430,231
5. Adjust Quality Basic Education (QBE) (\$21,576,229) to reflect an adjustment in the employer share of the State Health Benefit Plan premiums from 13.1% to 13.53%. The increase in employer share is offset by an increase in the Local Five Mill Share (\$4,315,246).	17,260,983
6. Increase computer charges (\$644,803) and decrease telecommunications charges (\$7,788) to reflect GTA rate structure adjustments.	637,015
7. Eliminate deferred funds for the Three O'Clock Project contract (\$100,000). Eliminate the Global Achievers International contract (\$139,750).	(239,750)
8. Adjust contracts to remove remaining deferred funds and ensure that the National Science Center is funded at \$1,100,000.	(667,222)
9. Redirect \$45,000 from the Sci-Trek contract to personal services to reduce central office lapse and eliminate remaining Sci-Trek funds due to facility closure (\$264,470).	(264,470)
10. Apply a 3% reduction to the Communities in Schools grant.	(39,619)
11. Apply a 3% reduction to Regional Educational Service Agencies (RESAs).	(335,512)
12. Reduce funding for charter school planning grants (\$4,491), K-12 Internet Access (\$109,330) and Migrant Education (\$8,026).	(121,847)
13. Reduce computer charges (\$178,912) and per diem and fees (\$43,612).	(222,524)
14. Reduce non-designated funds for the Reading and Math program (\$1,864,000). Adjust state funds in the Reading and Math program to reflect the receipt of \$200,000,000 in federal Reading First funds over the next six years (\$1,462,913).	(3,326,913)
15. Eliminate funding for Pay for Performance to reflect final year of program phase out in FY 2005.	(2,667,165)
16. Eliminate funding for Georgia Learning Resource Systems (GLRS) to reflect merger with Regional Educational Service Agencies (RESAs).	(14,377)
17. Add \$76,671 for the Teacher of the Year Program, including \$35,671 in contracts and \$41,000 in regular operating expenses, and reduce school improvement contracts (\$50,000).	26,671

# STATE BOARD OF EDUCATION

## BUDGET SUMMARY - FISCAL YEAR 2006

Governor's Recommended Adjustments to the Current Budget	Amounts
18. Provide funds for personal services for the Atlanta Area School for the Deaf (\$239,000), the Georgia Academy for the Blind (\$225,000), and the Georgia School for the Deaf (\$225,000) to avoid interruption of services to students and for the addition of the L-6 step.	689,000
19. Add funds for charter school operations, lease payments and renovations for State Chartered Special Schools and Start-Up Charter Schools.	400,000
20. Provide \$139,497,225 for QBE formula enrollment growth, \$30,650,963 for Equalization, and (\$60,035,906) for Local Five Mill Share.	110,112,282
21. Increase funds in the Health Insurance for Non-Certificated Personnel and Retired Teachers object class to reflect an adjustment in the State Health Benefit Plan per member/per month rates.	134,700,000
22. Provide additional funds for the Severely Emotionally Disturbed network to reflect actual enrollment.	4,913,593
23. Add funds to Pupil Transportation for increased operating costs (fuel) and for increased student populations.	4,968,320
24. Add funds to the Governor's Honors program to enhance agriculture education studies.	25,000
25. Provide funding for the Georgia Virtual High School initiative. Add \$248,900 for 3 positions and \$1,136,100 for course development and teacher contracts.	1,385,000
26. Provide additional funding for Educational Technology Training Centers (ETTCs) to maintain current operations, refresh equipment, and support local school systems with technology and data collection needs.	2,000,000
27. Increase regular operating expenses in Curriculum Development for the Georgia Performance Standards (GPS) implementation.	874,833
28. Increase funding for National Board Certification to provide 10% bonuses for new teachers earning national certification.	635,000
29. Add \$1,175,000 for Advanced Placement (AP) exams to meet actual expenditures and increase funds in Student Testing by \$3,082,054 to meet Criterion-Referenced Competency Tests (CRCT) contractual obligations.	4,257,054
30. Transfer \$9,704,191 in federal funds from Student Testing to Title VI-A State Assessment Programs and \$4,212,377 in federal funds from Title I-B Reading First to Title II-B Math/Science Partnership to properly account for expenditures.	Yes
31. Transfer funds for the L-6 step salary adjustment for public librarians to the Board of Regents.	(240,464)
32. Eliminate the Southern Center for International Studies contract (\$960,232) and transfer funds to the Career/Technology Education program to meet match and maintenance of effort requirements for federal funds.	Yes
33. Create a State Schools object class by transferring funds from the common object classes.	Yes
34. Realign object classes and program budgets to meet projected expenditures.	Yes
Subtotal	\$472,505,371
<b>TOTAL NET STATE GENERAL FUND ADJUSTMENTS</b>	<b>\$472,505,371</b>
<b>TOTAL STATE GENERAL FUNDS RECOMMENDED</b>	<b>\$6,406,497,361</b>

# STATE BOARD OF EDUCATION

## BUDGET SUMMARY - FISCAL YEAR 2006

Governor's Recommended Adjustments to the Current Budget	Amounts
--	---------

### CAPITAL OUTLAY SUMMARY - FISCAL YEAR 2006

	<u>Yr.</u>	<u>Principal</u>	<u>Debt Service</u>
<b>State Board of Education</b>			
1. Provide funds to construct 480 classrooms and renovate 249 classrooms in 24 school systems through the regular capital outlay program at the full entitlement level.	20	\$57,335,000	\$4,988,145
2. Provide funds to construct 716 classrooms in 25 school systems through the exceptional growth capital outlay program at the full entitlement level.	20	68,675,000	5,974,725
3. Provide funds to construct 73 classrooms in 3 school systems through the regular advanced capital outlay program.	20	7,470,000	649,890
4. Provide funds to construct 65 classrooms and renovate 41 classrooms in 5 school systems through the low wealth capital outlay program.	20	8,670,000	754,290
5. Provide funds for technology, career and agriculture education equipment in new schools.	5	9,815,000	2,218,190
6. Provide funds for renovation and equipment at the 3 state schools, including funds for a construction program manager.	5	6,200,000	539,400
7. Provide funds for roof replacement and major repairs to Sheffer Hall at the Georgia FFA-FCCLA Center in Covington.	5	215,000	18,705
Total		\$158,380,000	\$15,143,345
<b>STATE GENERAL FUNDS</b>			<b>\$6,421,640,706</b>

# STATE BOARD OF EDUCATION

## PROGRAM BUDGET SUMMARY - FISCAL YEAR 2006

Program Budgets	FY 2005 Appropriations		FY 2006 Governor's Recommendations	
	Total	State	Total	State
1. Agriculture Education	\$8,344,951	\$7,444,174	\$8,344,951	\$7,444,174
2. Alternative Education	3,320,878	1,320,623	3,281,259	1,281,004
3. Central Office	11,126,238	9,292,024	16,209,969	14,375,755
4. Core K-12	5,771,346,100	5,381,976,562	6,099,130,976	5,698,138,582
5. Curriculum	100,997,803	36,686,542	92,071,344	32,367,289
6. Health and Nutrition	257,745,074	35,421,953	258,540,828	36,217,707
7. Information Technology Services	21,898,470	13,257,679	25,585,304	16,549,684
8. Limited English Proficiency	11,200,380		11,200,380	
9. Pass-Thru Funding	132,223,517	113,334,820	266,923,517	248,034,820
10. Regional Educational Service Agencies	11,183,730	11,183,730	11,027,045	11,027,045
11. School Improvement	51,985,557	16,344,862	49,345,063	13,704,368
12. School Leadership	5,361,125	5,361,125	5,361,125	5,361,125
13. Special Education	367,261,407	88,115,087	373,157,102	94,010,782
14. Staff Development	84,297,114	11,776,419	84,932,114	12,411,419
15. State Schools	19,297,254	18,329,269	20,500,522	19,532,537
16. Student Excellence	2,603,743	1,391,743	2,628,743	1,416,743
17. Technology/Career Education	42,742,166	15,544,651	43,866,989	16,669,474
18. Testing	31,206,837	13,701,182	28,053,412	17,958,236
19. Transportation and Facilities	153,509,545	153,509,545	159,996,617	159,996,617
Subtotal	\$7,087,651,889	\$5,933,991,990	\$7,560,157,260	\$6,406,497,361
<b>TOTAL APPROPRIATIONS</b>	<b>\$7,087,651,889</b>	<b>\$5,933,991,990</b>	<b>\$7,560,157,260</b>	<b>\$6,406,497,361</b>

# STATE BOARD OF EDUCATION

## Quality Basic Education Funding Comparison

Program Area	Expenditures FY 2004	Appropriations FY 2005	Recommendations FY 2006
<b>DIRECT INSTRUCTION</b>			
Kindergarten, Primary and Elementary Grades (1-3)	\$1,701,449,206	\$1,707,110,524	\$1,786,068,564
Middle Grades (4-8)	1,558,843,885	1,564,815,699	1,605,189,710
High School Grades (9-12)	760,946,059	765,460,363	817,719,193
High School Vocational Labs (9-12)	202,217,533	202,846,671	217,385,131
Special Education	790,583,587	793,074,533	847,110,917
Gifted	191,525,578	192,300,693	208,975,513
Limited English-Speaking	70,181,744	70,492,962	79,709,901
Alternative Education	72,301,580	70,537,965	74,469,042
Remedial Education	22,048,886	22,033,782	21,238,501
<b>TOTAL DIRECT INSTRUCTIONAL</b>	<b><u>\$5,370,098,058</u></b>	<b><u>\$5,388,673,192</u></b>	<b><u>\$5,657,866,472</u></b>
<b>STAFF DEVELOPMENT</b>	\$31,146,339	\$31,135,509	\$32,295,096
<b>ADDITIONAL INSTRUCTION</b>	46,869,079	47,742,553	50,200,955
<b>MEDIA CENTER</b>	148,678,213	149,198,288	156,366,582
<b>ITINERANT/SUPPLEMENTAL SPEECH</b>	3,126,340	3,064,462	3,057,396
<b>INDIRECT COST</b>	920,705,498	922,876,443	952,754,203
<b>TEACHER SALARY SCHEDULE ADJUSTMENT</b>			103,454,317
<b>HEALTH INSURANCE INCREASE (QBE PORTION)</b>			21,576,229
<b>TEMPORARY QBE REDUCTION</b>	(283,478,659)	(332,835,102)	(332,835,102)
<b>TOTAL QBE FORMULA EARNINGS</b>	<b><u>\$6,237,144,868</u></b>	<b><u>\$6,209,855,345</u></b>	<b><u>\$6,644,736,148</u></b>
<b>OTHER CATEGORICAL GRANTS</b>			
Pupil Transportation	\$157,439,881	\$151,866,803	\$158,353,875
Sparsity Grants	6,261,321	6,352,443	6,352,443
Equalization	288,182,775	341,006,547	371,657,510
Low-Incidence Special Education	810,249	826,722	826,722
<b>TOTAL QBE FUNDS</b>	<b><u>\$6,689,839,094</u></b>	<b><u>\$6,709,907,860</u></b>	<b><u>\$7,181,926,698</u></b>
<b>LOCAL FIVE MILL SHARE</b>	<b><u>(\$1,206,225,204)</u></b>	<b><u>(\$1,264,596,078)</u></b>	<b><u>(\$1,328,947,230)</u></b>
<b>STATE SHARE</b>	<b><u>\$5,483,613,890</u></b>	<b><u>\$5,445,311,782</u></b>	<b><u>\$5,852,979,468</u></b>

# STATE BOARD OF EDUCATION

## FY 2006 QBE Formula Recommendation

Base Amount (Grades 9-12) = \$2,418.96

Program	FTE	Weight	Weighted FTE	Total FTE Earnings	Direct Cost Proportion	Direct Instructional Cost Plus Training and Experience
Kindergarten - EIP	13,807	2.0199	27,889	\$58,478,609	0.8988	\$80,057,414
Kindergarten	103,964	1.6391	170,407	346,842,704	0.8745	467,661,271
Grades 1-3 - EIP	32,492	1.7801	57,839	119,042,907	0.8898	171,426,680
Grades 1-3	300,457	1.2761	383,413	743,202,970	0.8465	1,066,923,199
Grades 4-5 - EIP	20,618	1.7736	36,568	75,220,261	0.8893	108,212,881
Grades 4-5	191,012	1.0285	196,456	360,798,116	0.8092	518,171,263
Grades 6-8 - Middle Grades	15,960	1.0129	16,166	29,815,138	0.8131	43,369,191
Grades 6-8 - Middle School	308,420	1.1154	344,012	650,776,843	0.8296	935,436,375
Grades 9-12	312,345	1.0000	312,345	573,760,302	0.8086	817,719,193
Vocational Lab	67,869	1.1926	80,941	155,655,064	0.8371	217,385,131
Special Education I	12,198	2.3657	28,857	59,817,941	0.8882	84,445,714
Special Education II	14,748	2.7695	40,845	86,369,211	0.9053	125,283,434
Special Education III	44,095	3.5251	155,439	336,939,304	0.9244	484,474,372
Special Education IV	6,626	5.7113	37,843	84,848,015	0.9514	121,834,627
Special Education V	4,253	2.4386	10,371	21,594,076	0.9011	31,072,770
Gifted	45,465	1.6490	74,972	145,954,579	0.8420	208,975,513
Limited English-Speaking	10,368	2.4876	25,791	55,725,814	0.9264	79,709,901
Alternative Education	17,618	1.5840	27,907	51,638,364	0.8016	74,469,042
Remedial Education	5,783	1.3011	7,524	14,738,404	0.8542	21,238,501
<b>Total Direct Instruction</b>	<b>1,528,098</b>		<b>2,035,585</b>	<b>3,971,218,622</b>		<b>\$5,657,866,472</b>
Staff Development						\$32,295,096
Additional Instruction						50,200,955
Media (Including T&E)						156,366,582
Itinerant/Supplemental Speech						3,057,396
Indirect Cost (Including T&E)						952,754,203
Teacher Salary Schedule Adjustment						103,454,317
Health Insurance Increase (QBE Portion)						21,576,229
Temporary QBE Reduction						(332,835,102)
<b>TOTAL QBE FORMULA EARNINGS</b>						<b>\$6,644,736,148</b>
Plus:						
Pupil Transportation						\$158,353,875
Sparsity Grants						6,352,443
Equalization						371,657,510
Low-Incidence Special Education						826,722
<b>TOTAL QBE EARNINGS</b>						<b>\$7,181,926,698</b>
Less: Local Five Mill Share						<b>(\$1,328,947,230)</b>
<b>STATE FUNDS -- FY 2006 (Includes \$1,874,463,317 for Training and Experience)</b>						<b>\$5,852,979,468</b>