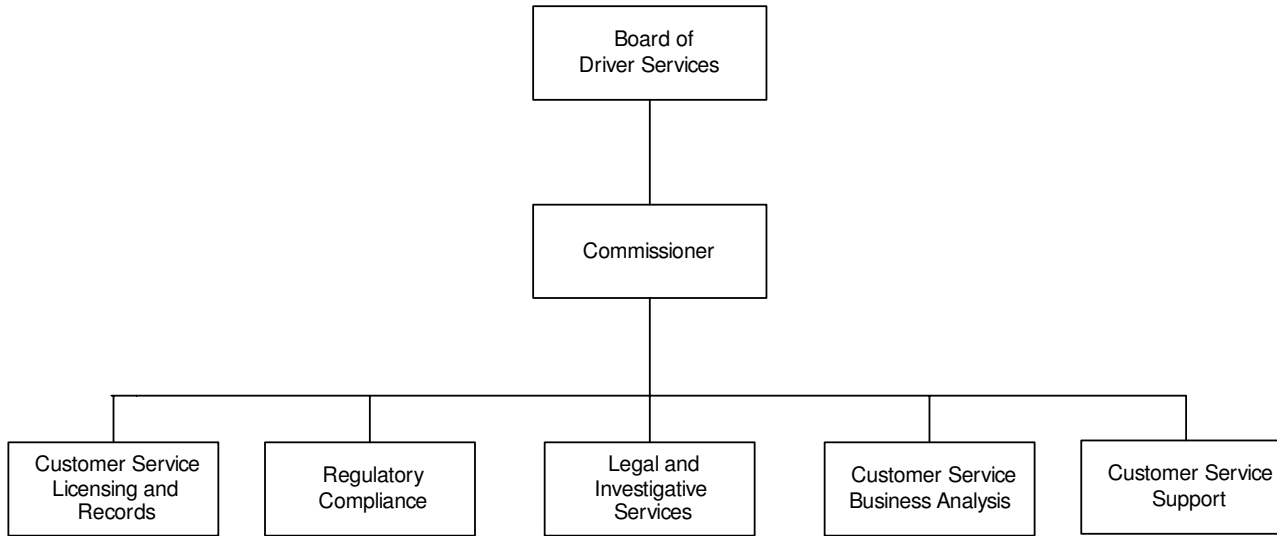


DEPARTMENT OF DRIVER SERVICES

ORGANIZATIONAL CHART



DEPARTMENT OF DRIVER SERVICES

Roles and Responsibilities:

The Department of Driver Services (DDS) was established by executive order on July 1, 2005, in accordance with HB 501.

CUSTOMER SERVICE SUPPORT

The Customer Service Support Division is responsible for the direction and management of the Department of Driver Services. The function of the division is to provide administrative support for the License Issuance and Regulatory Compliance Divisions. The areas within the division include administrative services, financial services, public information, legal services and information technology.

LICENSE ISSUANCE DIVISION

The issuance of driver's licenses, permits and administration of the commercial driver's license program are carried out by the License Issuance Division. The department utilizes 54 full testing customer service centers, and 4 part-time testing customer service centers. These centers are situated throughout the state. Additional responsibilities include suspension and reinstatement of driver licenses as well as public identification cards. The Driver Services Section strives to provide quality customer service. During FY 2005 the department issued 2,481,054 driver licenses and ID cards.

REGULATORY COMPLIANCE

The Regulatory Compliance Division is responsible for licensing driver training schools and instructors, licensing driver improvement clinics and instructors, and certifying ignition interlock devices and provider centers.

AUTHORITY

Chapter 16 of Title 40 of the Official Code of Georgia Annotated

DEPARTMENT OF DRIVER SERVICES

DEPARTMENT BUDGET FINANCIAL SUMMARY BY PROGRAM - FISCAL YEAR 2007

Program / Fund Sources	FY 2007 Agency Request Total	FY 2007 Governor' s Recommendation						Total
		FY 2006 Current Budget	Redistribution	Reductions	Enhancements	Other Adjustments	Total Changes	
Customer Service Support								
Other Funds						\$857	\$857	\$857
State General Funds	\$8,485,359	\$4,948,415	\$3,664,357	(\$16,000)		180,287	3,828,644	8,777,059
Total	8,485,359	4,948,415	3,664,357	(16,000)		181,144	3,829,501	8,777,916
License Issuance								
Other Funds	200,000	200,000				5,251	5,251	205,251
State General Funds	37,851,738	41,924,451	(4,826,757)	(79,677)	\$1,404,607	1,067,656	(2,434,171)	39,490,280
Total	38,051,738	42,124,451	(4,826,757)	(79,677)	1,404,607	1,072,907	(2,428,920)	39,695,531
Regulatory Compliance								
Other Funds	515,075	515,075				273	273	515,348
State General Funds	2,020,517	291,000	1,162,400	(20,000)	2,856,218	74,436	4,073,054	4,364,054
Total	2,535,592	806,075	1,162,400	(20,000)	2,856,218	74,709	4,073,327	4,879,402
TOTAL FUNDS	\$49,072,689	\$47,878,941	\$0	(\$115,677)	\$4,260,825	\$1,328,760	\$5,473,908	\$53,352,849
Less:								
Other Funds	\$715,075	\$715,075				\$6,381	\$6,381	\$721,456
State General Funds	\$48,357,614	\$47,163,866		(\$115,677)	\$4,260,825	\$1,322,379	\$5,467,527	\$52,631,393
TOTAL STATE FUNDS	\$48,357,614	\$47,163,866		(\$115,677)	\$4,260,825	\$1,322,379	\$5,467,527	\$52,631,393

DEPARTMENT OF DRIVER SERVICES

DEPARTMENT BUDGET FINANCIAL SUMMARY BY OBJECT CLASS - FISCAL YEAR 2007

Object Classes / Fund Sources	FY 2007 Agency Request Total	FY 2004 * Expenditures	FY 2005 * Expenditures	FY 2007 Governor' s Recommendations		
				FY 2006 Current Budget	Changes	Total
Personal Services	\$34,809,292	\$58,013,902	\$56,367,277	\$33,007,504	\$2,298,130	\$35,305,634
Regular Operating Expenses	2,998,845	7,137,254	8,066,979	3,912,317	64,128	3,976,445
Travel	134,598	464,062	320,548	137,598	(3,000)	134,598
Motor Vehicle Purchases	130,000	332,206	596,547	130,000		130,000
Equipment	206,884	345,335	762,965	206,884		206,884
Computer Charges	2,537,747	12,461,537	13,615,848	2,228,805	358,942	2,587,747
Real Estate Rentals	2,504,039	2,730,422	2,667,905	2,504,039		2,504,039
Telecommunications	1,140,855	2,627,707	2,245,315	1,141,365	(510)	1,140,855
Per Diem and Fees	208,225	343,198	77,365	208,225		208,225
Contracts	1,082,056	1,318,987	3,457,639	1,082,056	2,756,218	3,838,274
Capital Outlay			796,570			
Conviction Reports	329,824	348,651	147,388	329,824		329,824
Driver' s License Processing	2,990,324	3,459,434	3,826,205	2,990,324		2,990,324
Postage		750,000	750,000			
Motor Vehicle Tags and Decals			2,000,000			
TOTAL FUNDS	\$49,072,689	\$90,332,695	\$95,698,551	\$47,878,941	\$5,473,908	\$53,352,849
<u>Less:</u>						
Federal Funds		\$2,496,995	\$7,085,743			
Other Funds	\$715,075	7,196,898	9,361,188	\$715,075	\$6,381	\$721,456
DOAS Indirect Funds		1,960,000	1,960,000			
Subtotal	\$715,075	\$11,653,893	\$18,406,931	\$715,075	\$6,381	\$721,456
State General Funds	\$48,357,614	\$78,678,802	\$77,291,620	\$47,163,866	\$5,467,527	\$52,631,393
TOTAL STATE FUNDS	\$48,357,614	\$78,678,802	\$77,291,620	\$47,163,866	\$5,467,527	\$52,631,393
Positions	813	1,452	1,449	764	35	799
Motor Vehicles	131	326	326	119		119

*The Department of Driver Services was established on July 1, 2005 per HB 501 of the 2005 General Assembly. Prior year expenditures are for the Department of Motor Vehicle Services, and include functions that were transferred to the Department of Revenue, Department of Public Safety, Department of Transportation, and Public Service Commission.

DEPARTMENT OF DRIVER SERVICES

PROGRAM BUDGET SUMMARY - FISCAL YEAR 2007

Program Budgets	FY 2006 Current Budget			FY 2007 Governor' s Recommendations		
	State Funds	Federal and Other Funds	Total	State Funds	Federal and Other Funds	Total
Customer Service Support	\$4,948,415		\$4,948,415	\$8,777,059	\$857	\$8,777,916
License Issuance	41,924,451	\$200,000	42,124,451	39,490,280	205,251	39,695,531
Regulatory Compliance	291,000	515,075	806,075	4,364,054	515,348	4,879,402
TOTAL FUNDS	\$47,163,866	\$715,075	\$47,878,941	\$52,631,393	\$721,456	\$53,352,849

DEPARTMENT OF DRIVER SERVICES

BUDGET SUMMARY - FISCAL YEAR 2007

Governor' s Recommended Adjustments to the Current Budget	Amounts
FY 2006 STATE GENERAL FUND APPROPRIATIONS	\$47,163,866
Department of Driver Services	
1. Annualize the cost of the FY 2006 salary adjustment (\$250,470) and provide for a salary increase in FY 2007 of up to 4% effective January 1, 2007 (\$365,961).	\$616,431
2. Increase funds to reflect an adjustment in the employer share of State Health Benefit Plan premiums from 14.20% to 16.713%.	638,241
3. Increase funds to reflect an adjustment in Workers' Compensation premiums.	67,707
4. Increase the Customer Service Support (\$3,664,357) and Regulatory Compliance (\$1,162,400) programs, and decrease the License Issuance program (\$4,826,757) to establish the base budget for the Department of Driver Services.	Yes
5. Reduce operating expenses in the License Issuance (\$79,677), Customer Service Support (\$16,000), and Regulatory Compliance (\$20,000) programs.	(115,677)
6. Recognize additional revenues collected from fees to support driver' s education (SB 226).	2,756,218
7. Fund complimentary Photo Identification cards to qualifying individuals.	100,000
8. Minimize wait times at DDS locations by adding 35 examiner positions in the License Issuance program and increasing personal services.	945,665
9. Improve customer access by expanding agency services available on the internet by increasing operating expenses in the License Issuance program.	358,942
10. Provide additional funds for the Regulatory Compliance program for motorcycle safety education.	100,000
TOTAL NET STATE GENERAL FUND ADJUSTMENTS	\$5,467,527
TOTAL STATE GENERAL FUNDS RECOMMENDED	\$52,631,393