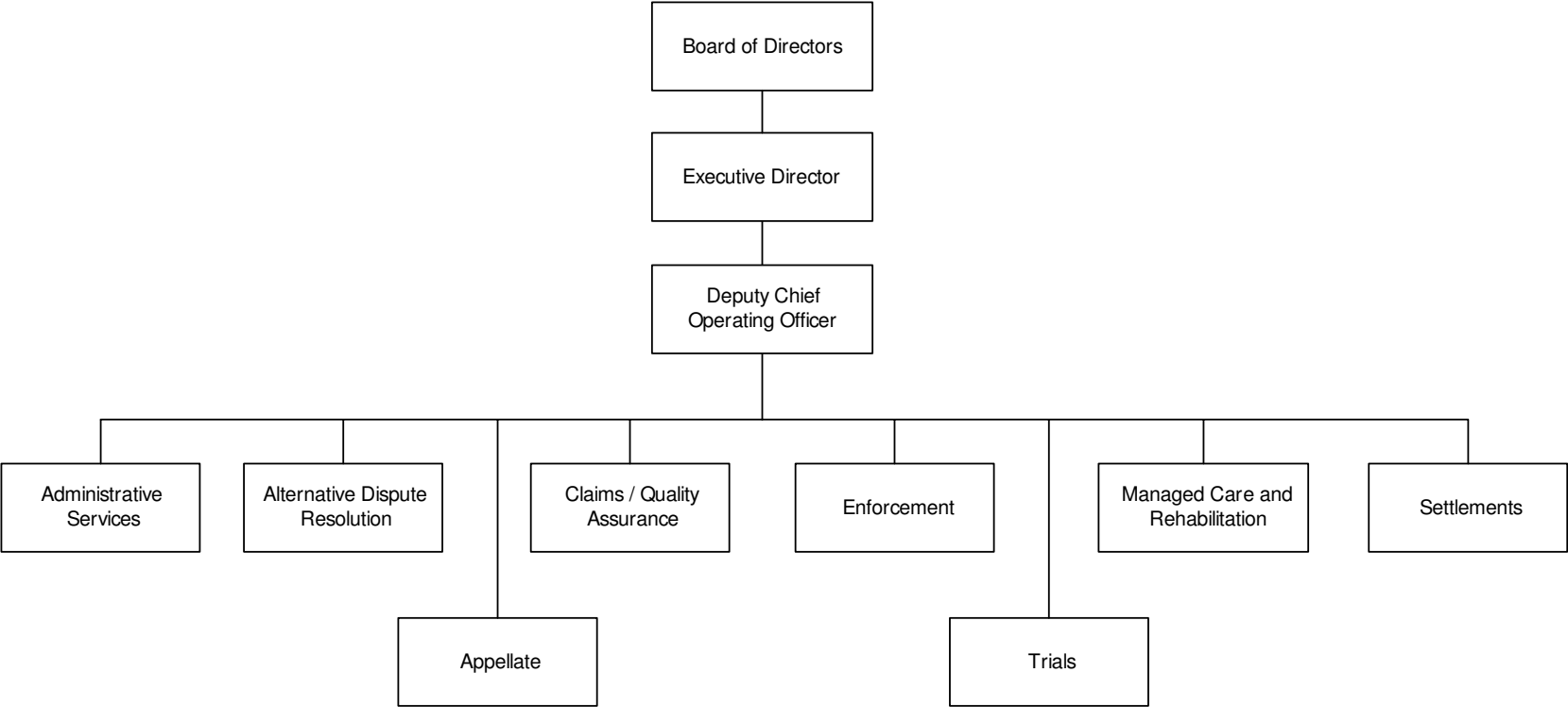


STATE BOARD OF WORKERS' COMPENSATION

ORGANIZATIONAL CHART



STATE BOARD OF WORKERS' COMPENSATION

Roles and Responsibilities:

WORKERS' COMPENSATION LAW

Most Georgia employees are covered by the state's workers' compensation law. Since passage of this law, employees may now gain benefits from employers when injured on the job. The law ensures employees certain benefits paid to them as a result of on-the-job injuries. The same law also provides employers with a form of limited liability from these injuries.

The state's workers' compensation law applies to all employers that have at least 3 full-time, part-time, or seasonal employees. Some categories of workers are exempt, however, including: federal employees, railroad workers, farmers, domestic servants, business partners, independent contractors, and some corporate officers.

The state created the State Board of Workers' Compensation to oversee the workers' compensation law. The board may create rules, regulations, and policies to enforce this area of law. The board is also vested with the responsibility of conducting training seminars that educate employers, employees, insurers, self-insurers, physicians, and rehabilitation suppliers about workers' compensation law changes and other related issues.

If either the employer or an employee involved in a workers' compensation claim wishes to contest the facts involved in the case, an administrative law judge under the board or a board mediator may be used to settle the issue. Either party disagreeing with this ruling may appeal the decision through the appellate division, state superior or appellate courts; however, that avenue may only be used to debate points of law, not facts of a case.

ORGANIZATIONAL STRUCTURE

The board consists of three directors, 1 of which is the chair, and all are appointed by the Governor. The directors promulgate workers' compensation regulations, and develop workers' compensation policy. They also hear appeals of administrative law judges' decisions and render rulings on appeals, and approve and submit budget requests for the agency.

The executive director/chief operating officer oversees the operations of the board. The executive director also provides management supervision, makes presentations to various groups as requested, assists the directors as needed, and acts as peer review of medical services.

The Alternative Dispute Resolution Division mediates appropriate issues, issues orders, and makes presentations to various groups as requested.

The Appellate Division researches cases that are appealed to the board, recommends appropriate action, receives and processes documents regarding appealed cases, and sets calendars for appellate hearings.

The Claims/Quality Assurance Division maintain the file room and filing system, screen requests for hearings, operate the mailroom, process mail and forward files and mail to divisions, locate files and resolve problems caused by duplicate files, code and enters data, and perform quality assurance reviews of insurers and self-insurers.

The Enforcement Division investigates incidents of non-compliance and incidents alleging fraud, maintains information

on employers' insurance coverage, and makes presentations to various groups regarding fraud/compliance.

The Trials Division holds formal hearings, and makes presentations to various groups as requested.

The Managed Care and Rehabilitation Division processes requests for rehabilitation services, performs quality assurance reviews of rehabilitation suppliers, holds conferences to resolve disputes, reviews and approves rehabilitation plans, reviews applications of managed care organizations, and registers rehabilitation suppliers.

The Settlements Division reviews and processes stipulated settlements and requests for advances.

AUTHORITY

Title 34-9, Official Code of Georgia Annotated.

STATE BOARD OF WORKERS' COMPENSATION

DEPARTMENT BUDGET FINANCIAL SUMMARY BY PROGRAM - FISCAL YEAR 2007

Program / Fund Sources	FY 2007 Agency Request Total	FY 2007 Governor' s Recommendation						Total Changes	Total
		FY 2006 Current Budget	Redistribution	Reductions	Enhancements	Other Adjustments			
Administer the Workers' Comp Laws									
State General Funds	\$9,807,636	\$9,366,793	\$179,293				\$355,360	\$534,653	\$9,901,446
Total	9,807,636	9,366,793					355,360	534,653	9,901,446
Administration									
Other Funds	120,000	240,000		(\$120,000)				(120,000)	120,000
State General Funds	6,304,927	6,330,487	(179,293)				47,959	(131,334)	6,199,153
Total	6,424,927	6,570,487	(179,293)	(120,000)			47,959	(251,334)	6,319,153
TOTAL FUNDS	\$16,232,563	\$15,937,280	\$0	(\$120,000)	\$0		\$403,319	\$283,319	\$16,220,599
<u>Less:</u>									
Other Funds	\$120,000	\$240,000		(\$120,000)				(\$120,000)	\$120,000
State General Funds	\$16,112,563	\$15,697,280					\$403,319	\$403,319	\$16,100,599
TOTAL STATE FUNDS	\$16,112,563	\$15,697,280	\$0	\$0	\$0		\$403,319	\$403,319	\$16,100,599

STATE BOARD OF WORKERS' COMPENSATION

DEPARTMENT BUDGET FINANCIAL SUMMARY BY OBJECT CLASS - FISCAL YEAR 2007

Object Classes / Fund Sources	FY 2007 Agency Request Total	FY 2004 Expenditures	FY 2005 Expenditures	FY 2007 Governor' s Recommendations		
				FY 2006 Current Budget	Changes	Total
Personal Services	\$10,693,496	\$10,015,026	\$9,881,076	\$10,180,759	\$617,938	\$10,798,697
Regular Operating Expenses	492,115	470,115	420,010	470,115		470,115
Travel	150,600	140,600	153,246	140,600	10,000	150,600
Equipment	50,048	44,048	44,048	44,048		44,048
Computer Charges	457,596	3,261,976	398,377	474,596	33,000	507,596
Real Estate Rentals	1,301,555	1,296,009	1,233,174	1,276,009		1,276,009
Telecommunications	176,580	176,744	194,245	176,580		176,580
Per Diem and Fees	173,100	183,100	169,424	183,100		183,100
Contracts	306,686			366,686	(60,000)	306,686
Payment to State Treasury	2,430,787	1,423,053	2,514,787	2,624,787	(317,619)	2,307,168
TOTAL FUNDS	\$16,232,563	\$17,010,671	\$15,008,387	\$15,937,280	\$283,319	\$16,220,599
<u>Less:</u>						
Other Funds	\$120,000	\$364,000		\$240,000	(\$120,000)	\$120,000
State General Funds	\$16,112,563	\$16,646,671	\$15,008,387	\$15,697,280	\$403,319	\$16,100,599
TOTAL STATE FUNDS	\$16,112,563	\$16,646,671	\$15,008,387	\$15,697,280	\$403,319	\$16,100,599
Positions	166	166	166	166		166
Motor Vehicles	1	1	1	1		1

STATE BOARD OF WORKERS' COMPENSATION

PROGRAM BUDGET SUMMARY - FISCAL YEAR 2007

Program Budgets	FY 2006 Current Budget			FY 2007 Governor' s Recommendations		
	State Funds	Federal and Other Funds	Total	State Funds	Federal and Other Funds	Total
Administer the Workers' Comp Laws	\$9,366,793		\$9,366,793	\$9,901,446		\$9,901,446
Administration	6,330,487	\$240,000	6,570,487	6,199,153	\$120,000	6,319,153
TOTAL	\$15,697,280	\$240,000	\$15,937,280	\$16,100,599	\$120,000	\$16,220,599

STATE BOARD OF WORKERS' COMPENSATION

BUDGET SUMMARY - FISCAL YEAR 2007

Governor' s Recommended Adjustments to the Current Budget	Amounts
FY 2006 STATE GENERAL FUND APPROPRIATIONS	\$15,697,280
State Board of Workers' Compensation	
1. Annualize the cost of the FY 2006 salary adjustment (\$95,474) and provide for a salary increase in FY 2007 of up to 4% effective January 1, 2007 (\$102,515).	\$197,989
2. Increase funds to reflect an adjustment in the Workers' Compensation premiums.	12,635
3. Increase funds to reflect an adjustment in the employer share of State Health Benefit Plan premiums from 14.20% to 16.713%.	192,695
4. Reflect other funds reduction in the Administrative program.	Yes
5. Redirect funds from contracts (\$60,000) and Payments to State Treasury (\$317,619) to 5 vacant positions (\$334,619), travel (\$10,000), and purchase tracking software (\$33,000).	Yes
TOTAL NET STATE GENERAL FUND ADJUSTMENTS	\$403,319
TOTAL STATE GENERAL FUNDS RECOMMENDED	\$16,100,599