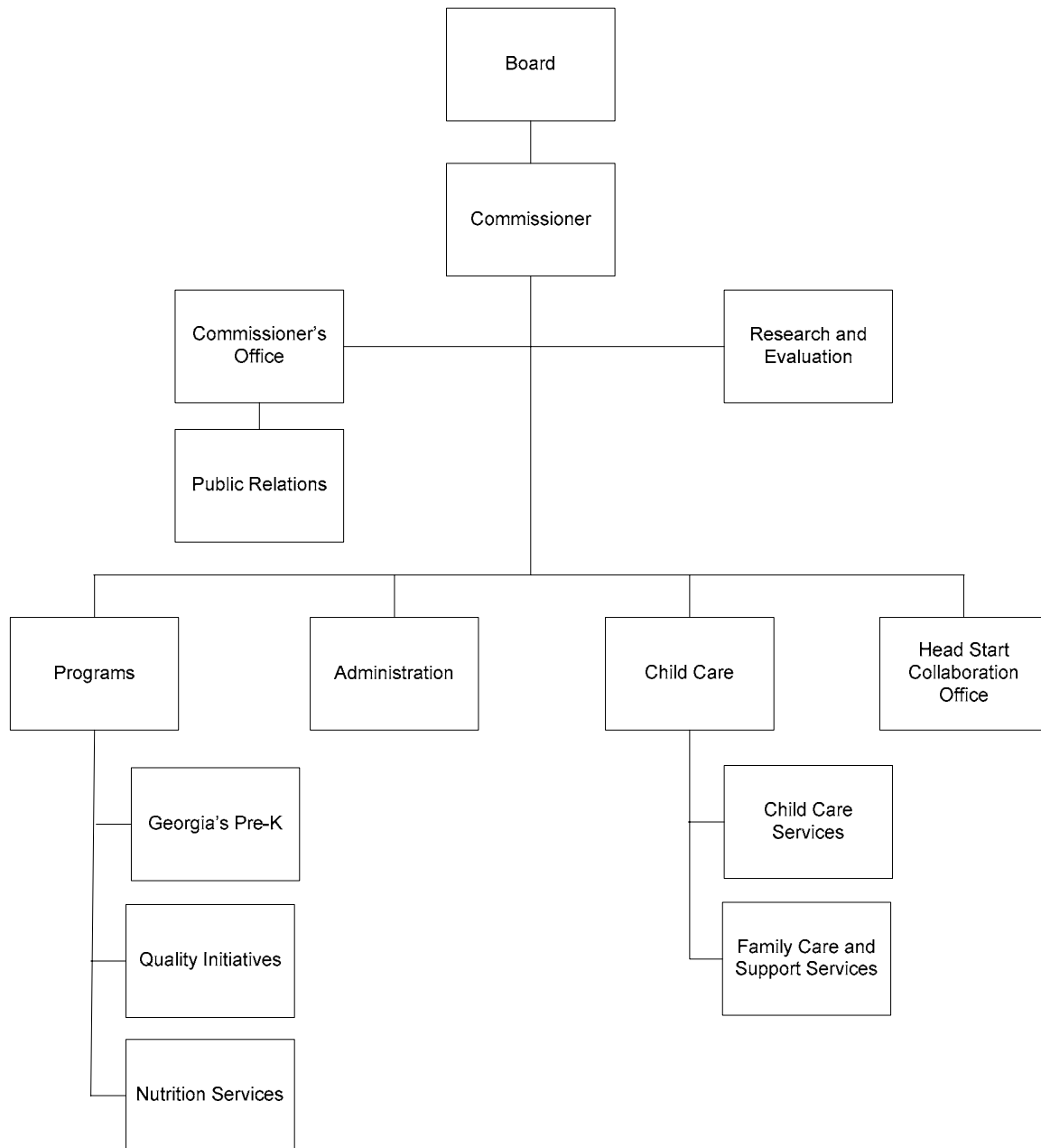


**BRIGHT FROM THE START: GEORGIA DEPARTMENT OF
EARLY CARE AND LEARNING
ORGANIZATIONAL CHART**



BRIGHT FROM THE START: GEORGIA DEPARTMENT OF EARLY CARE AND LEARNING

ROLES AND RESPONSIBILITIES

Bright from the Start: Georgia Department of Early Care and Learning is responsible for meeting the child care and early education needs of Georgia's children ages birth through school age and their families. It administers the nationally known Pre-Kindergarten (Pre-K) Program, licenses and registers child care centers and home-based child care, administers federal nutrition programs, and houses the Head Start Collaboration Office. Bright from the Start also works to enhance the quality and availability of early care and education by managing the Standards of Care and Homes of Quality programs, distributing federal funding, and working collaboratively with Georgia Child Care Resource and Referral Agencies and other organizations throughout the state.

PRE-KINDERGARTEN SERVICES

Georgia's lottery-funded voluntary Pre-Kindergarten Program currently serves approximately 76,600 students in 3,840 classes. Georgia's Pre-K Program is one of the largest and most comprehensive Pre-K programs in the nation and continues to be a model for other states.

Pre-K is offered in public school systems as well as by private providers. Children four years of age on September 1st of the current school year, whose parents are Georgia residents, are eligible to attend Georgia's Pre-K Program.

CHILD CARE SERVICES

Child Care Services is responsible for licensing and registering approximately 3,000 child care learning centers, over 6,650 family child care homes, 2,600 informal care providers, and 230 group day care homes. Licensing consultants conduct annual licensing inspections of all child care facilities and conduct additional periodic visits to all child care programs to evaluate compliance with state requirements and to provide consultation, training, and technical assistance to child care programs.

Child Care Services also provides regular customer-focused licensing orientation sessions for prospective centers and group day

care homes; responds to inquiries from parents, concerned citizens, and others regarding child care programs; and processes criminal record checks on all directors and family day care home providers.

NUTRITION SERVICES

The Nutrition Services Program is responsible for administering the United States Department of Agriculture's Child and Adult Care Food Program (CACFP) and the Summer Food Service Program (SFSFP) for Georgia. The goal of these programs is to ensure that low-income children and adults throughout Georgia have access to nutritious meals while they are in a day care setting and during the summer when school is not in session.

QUALITY INITIATIVES

Bright from the Start works in a number of ways to enhance the quality of early child care and education experiences in Georgia. In partnership with internal and external resources, the Quality Initiatives Program implements innovative strategies that focus on improving the quality of early education, child care, and nutrition for Georgia's children and families. The division oversees the Standards of Care and Homes of Quality Programs, the Even Start Literacy Program, coordinates the child care resource and referral agency system, and elevates public awareness surrounding early childhood education issues.

The Quality Initiatives Program distributes the federal Child Care Development Fund quality dollars to improve the quality, affordability, and accessibility of child care for children and families.

Training and professional development are integral parts of all programs administered by Bright from the Start. The program coordinates training and technical assistance for approximately 15,000 child care workers, early education providers, and program sponsors annually.

AUTHORITY

Title 20 of the Official Code of Georgia Annotated.

**BRIGHT FROM THE START: GEORGIA DEPARTMENT OF
EARLY CARE AND LEARNING
PROGRAM BUDGET AND PERFORMANCE MEASURES - FY 2008**

DEPARTMENT BUDGET SUMMARY	FY 2007	Changes	FY 2008
	<u>Current Budget</u>		<u>Recommended</u>
State General Funds	\$4,056,199	\$457,415	\$4,513,614
Lottery Funds	301,953,447	22,903,899	324,857,346
TOTAL STATE FUNDS	\$306,009,646	\$23,361,314	\$329,370,960
Federal Funds	119,641,989	64,690	119,706,679
Other Funds	155,000		155,000
TOTAL FUNDS	\$425,806,635	\$23,426,004	\$449,232,639

BUDGET RECOMMENDATIONS BY DEPARTMENT (Information Only):

Statewide Budget Changes:

State General Funds

1. Annualize the cost of the FY 2007 salary adjustment (Total Funds: \$120,164).	\$55,474
2. Provide for a general salary increase of 3% effective January 1, 2008 and provide for performance increases.	62,665
3. Reflect an adjustment in the employer share of State Health Benefit Plan premiums from 16.713% to 22.843%.	259,669
4. Reflect an adjustment in Workers' Compensation premiums.	79,607
Total Change	<u>\$457,415</u>

Lottery Funds

1. Annualize the cost of the FY 2007 salary adjustment.	\$1,246,354
2. Provide for a general salary increase of 3% effective January 1, 2008 and provide for performance increases.	44,976
3. Provide for a general salary increase of 3% for Pre-K teachers effective September 1, 2007.	5,791,293
4. Reflect an adjustment in the employer share of State Health Benefit Plan premiums from 16.713% to 18.534% for Pre-K teachers and from 16.713% to 22.843% for lottery-funded staff.	3,192,678
Total Change	<u>\$10,275,301</u>

BUDGET RECOMMENDATIONS BY PROGRAM:

CHILD CARE SERVICES

Purpose: Guide and assist child care learning facilities to promote safe, healthy, quality child care so that children experience optimum opportunities for learning and growth.

Performance Measures:	FY 2005	FY 2006	FY 2007	FY 2008
	<u>Actual</u>	<u>Actual</u>	<u>Estimated</u>	<u>Estimated</u>
1. Number of licensing, monitoring, and technical assistance visits to child care learning centers and group day care homes each fiscal year	N/A	6,638	6,708	6,750
2. Percentage of family day care homes that receive licensing or technical assistance visits each year	N/A	40%	80%	80%

Recommended Change:

1. Fund statewide budget changes (Total Funds: \$522,105).	\$457,415
Total Change	<u>\$457,415</u>

**BRIGHT FROM THE START: GEORGIA DEPARTMENT OF
EARLY CARE AND LEARNING
PROGRAM BUDGET AND PERFORMANCE MEASURES - FY 2008**

Program Budget:	FY 2007	FY 2008
	<u>Current Budget</u>	<u>Recommended</u>
State General Funds	\$4,056,199	\$4,513,614
Federal Funds	3,604,020	3,668,710
Other Funds	155,000	155,000
Total Funds	\$7,815,219	\$8,337,324

NUTRITION

Purpose: Ensure that eligible children and adults receive USDA-compliant meals.

Performance Measures:	FY 2005	FY 2006	FY 2007	FY 2008
	<u>Actual</u>	<u>Actual</u>	<u>Estimated</u>	<u>Estimated</u>
1. Number of meals served per year by providers in the Child and Adult Care Food Program and the Summer Food Service Program	N/A	79,660,859	79,760,859	80,000,000
2. Percentage of eligible providers reviewed with no missing meal components in the Child and Adult Care Food Program	72%	72%	73%	74%

Program Budget:	FY 2007	FY 2008
	<u>Current Budget</u>	<u>Recommended</u>
Federal Funds	\$93,000,000	\$93,000,000
Total Funds	\$93,000,000	\$93,000,000

PRE-KINDERGARTEN PROGRAM

Purpose: Provide funding, training, technical assistance, and oversight of Pre-K programs operated by public and private providers throughout the state.

Performance Measures:	FY 2005	FY 2006	FY 2007	FY 2008
	<u>Actual</u>	<u>Actual</u>	<u>Estimated</u>	<u>Estimated</u>
1. Georgia Pre-K program enrollment	71,754	73,702	76,586	78,000
2. Percentage of Pre-K programs meeting or exceeding standards as determined by the Pre-K Quality Assessment	85%	91%	93%	95%

Recommended Change:

Lottery Funds

1. Fund statewide budget changes.	\$10,275,301
2. Transfer funds from the Georgia Student Finance Commission to fund 3,000 additional slots, bringing the total Pre-K enrollment to 78,000.	12,628,598
Total Change	\$22,903,899

Program Budget:	FY 2007	FY 2008
	<u>Current Budget</u>	<u>Recommended</u>
Lottery Funds	\$301,953,447	\$324,857,346
Federal Funds	667,823	667,823
Total Funds	\$302,621,270	\$325,525,169

**BRIGHT FROM THE START: GEORGIA DEPARTMENT OF
EARLY CARE AND LEARNING
PROGRAM BUDGET AND PERFORMANCE MEASURES - FY 2008**

QUALITY INITIATIVES

Purpose: Explore new ideas and help implement innovative strategies that focus on improving the quality of early education, child care, and nutrition for Georgia's children and families.

Performance Measures:	FY 2005	FY 2006	FY 2007	FY 2008
	<u>Actual</u>	<u>Actual</u>	<u>Estimated</u>	<u>Estimated</u>
1. Number of Standards of Care Program training attendees	1,671	2,356	2,400	2,400
2. Percentage of centers attaining Center of Distinction or Center of Recognition	N/A	N/A	5%	5%
3. Number of providers participating in the Homes of Quality Program	147	137	200	250

Program Budget:	FY 2007	FY 2008
	<u>Current Budget</u>	<u>Recommended</u>
Federal Funds	\$22,370,146	\$22,370,146
Total Funds	<u>\$22,370,146</u>	<u>\$22,370,146</u>

BRIGHT FROM THE START: GEORGIA DEPARTMENT OF EARLY CARE AND LEARNING

DEPARTMENT BUDGET FINANCIAL SUMMARY BY OBJECT CLASS - FY 2008

Object Classes / Fund Sources	FY 2005 Expenditures	FY 2006 Expenditures	FY 2007 Current Budget	FY 2008 Agency Request Total	FY 2008 Governor's Recommendation
Personal Services	\$4,194,553	\$7,674,412	\$8,361,435	\$8,547,415	\$9,106,641
Regular Operating Expenses	281,214	1,516,150	2,247,774	2,182,774	2,247,774
Travel	264,998	597,459			
Equipment		72,000	60,500	60,500	60,500
Computer Charges	3,598	187,353	507,250	507,250	507,250
Real Estate Rentals	222,715	400,524	508,242	508,242	508,242
Telecommunications	178,865	217,284	282,700	282,700	282,700
Per Diem and Fees	84,721	1,419,919			
Contractual Services	352,634	2,995,577	4,335,360	4,335,360	4,335,360
Federal Programs	88,121,976	95,721,933	93,175,000	93,175,000	93,175,000
Standards of Care	12,953,021	18,908,113	22,842,060	22,842,060	22,842,060
Pre-Kindergarten Grants	269,169,363	282,510,018	293,486,314	311,883,314	316,167,112
Pre-Kindergarten - Personal Services	2,168,515				
Pre-Kindergarten - Operations	4,909,388				
TOTAL FUNDS	\$382,905,561	\$412,220,742	\$425,806,635	\$444,324,615	\$449,232,639
<u>Less:</u>					
Federal Funds	\$103,482,486	\$118,165,820	\$119,641,989	\$119,706,679	\$119,706,679
Other Funds		118,805	155,000	155,000	155,000
Subtotal	\$103,482,486	\$118,284,625	\$119,796,989	\$119,861,679	\$119,861,679
State General Funds	\$3,175,809	\$4,041,144	\$4,056,199	\$4,120,889	\$4,513,614
Lottery Funds	276,247,266	289,894,973	301,953,447	320,342,047	324,857,346
TOTAL STATE FUNDS	\$279,423,075	\$293,936,117	\$306,009,646	\$324,462,936	\$329,370,960
Positions	182	197	197	197	197
Motor Vehicles	1	1	1	1	1